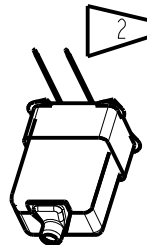
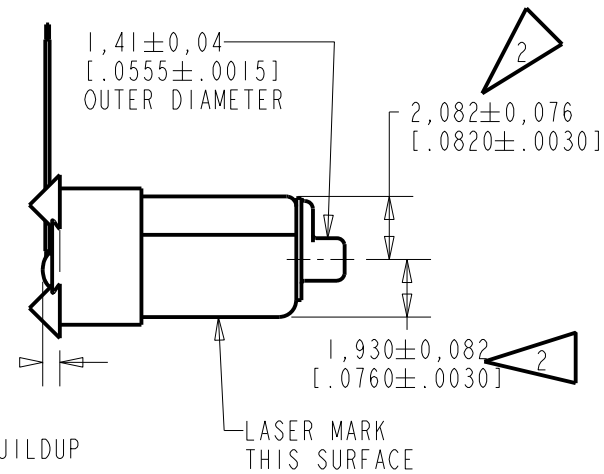
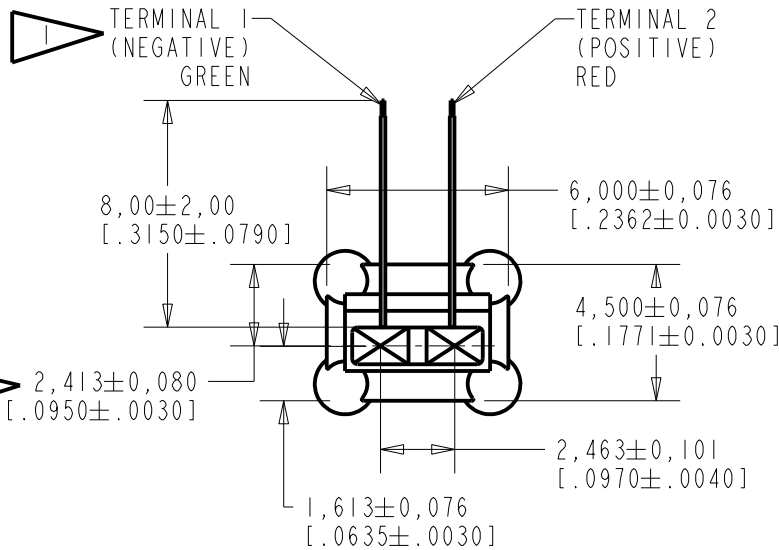
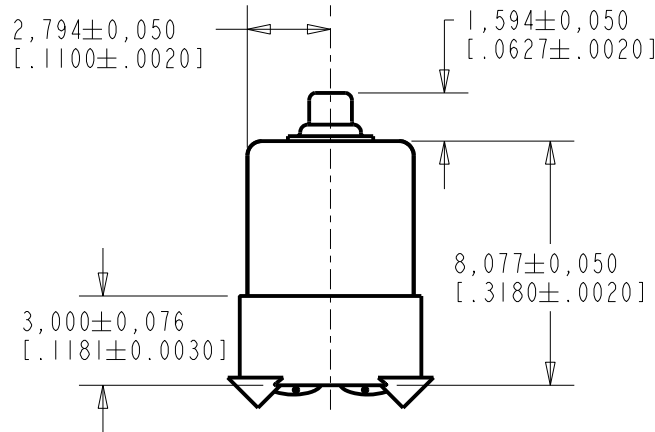


EF-23168-P109

SHT 1.1

NOTES:

- 1 A POSITIVE GOING VOLTAGE AT TERMINAL 2, RELATIVE TO TERMINAL 1, CAUSES A DECREASE IN PRESSURE AT THE SOUND OUTLET.
- 2 LOCATED FROM TWO SURFACES FOR CUSTOMER CONVENIENCE. ONLY APPLICABLE FROM ONE SURFACE, NOT TO BE USED TOGETHER. HORIZONTAL LOCATION FOR TERMINAL CENTERED TO  $\pm 0,17$  [.007].



NOMINAL WEIGHT  
.66 GRAM

DIMENSIONS IN MILLIMETERS [INCHES]

Revision	C.O. #	Implementation Date	RELEASE LEVEL	REVISION
A	C40100704	7-1-11	Active	A

**KNOWLES ELECTRONICS**  
ITASCA, ILLINOIS U.S.A.

SCALE: 2:1	DR. BY KL	DATE 7-1-11
DO NOT SCALE DRAWING	CK. BY GJP	DATE 7-27-11
TITLE: RECEIVER OUTLINE DRAWING	EF-23168-P109 SHT 1.1	APP. BY GJP
		DATE 7-27-11

NOTE:

1. UNITS ARE TESTED AS INDIVIDUAL RECEIVERS. FOR THESE SPECIFICATIONS SEE EF-23168-000, SHEET 2.1.

Revision	C.O. #	Implementation Date	RELEASE LEVEL	REVISION
			<b>Active</b>	<b>A</b>
A	C40100704	7-1-11		

<p><b>KNOWLES ELECTRONICS</b> ITASCA, ILLINOIS U.S.A.</p>	<small>WHEN TEST LIMITS ARE USED TO ESTABLISH INCOMING INSPECTION ACCEPTANCE/REJECTION CRITERIA, CORRELATION OF TEST EQUIPMENT WITH KNOWLES IS ALSO REQUIRED FOR ELIMINATION OF EQUIPMENT AND TEST METHOD VARIATION</small>		<small>DR. BY</small> KL	<small>DATE</small> 7-1-11
	<small>TITLE:</small>		<small>CK. BY</small> GJP	<small>DATE</small> 7-27-11
	<b>RECEIVER</b>		<b>EF-23168-P109</b>	
	PERFORMANCE SPECIFICATION		<b>SHT 2.1</b>	
			<small>APP. BY</small> GJP	<small>DATE</small> 7-27-11